

- A - *Ilex opaca* (American Holly), 8' o.c.
- B - *Vaccinium corymbosum* (Highbush Blueberry), 3' o.c.
- C - *Rhododendron viscosum* (Swamp Azalea), or *Cornus sericea* (Redosier Dogwood),  
or *Ilex glabra nana* (Dwarf Inkberry)
- D - *Hemerocallis hybrids* (Hybrid daylilies e.g. 'Happy Returns'), 12" o.c. or *Phlox subulata* (Thrift), 12" o.c.
- E - Wildflower Mix, 85 SF; sample mix:
  - 50% *Rudbeckia hirta* (Black-Eyed Susan)
  - 20% *Echinacea purpurea* (Purple Coneflower),
  - 20% *Liatrus spicata* (Blazing-Star),
  - 10% *Asclepias tuberosa* (Butterfly Weed)

If using plants (vs. seed) for wildflowers, space 18" o.c. (19 -*Rudbeckia*, 8 - *Echinacea*, 8- *Liatrus*, 4 - *Asclepias*) <seeding is lower cost but higher maintenance option due to need for nurturing seedlings>  
note: o.c. = on center

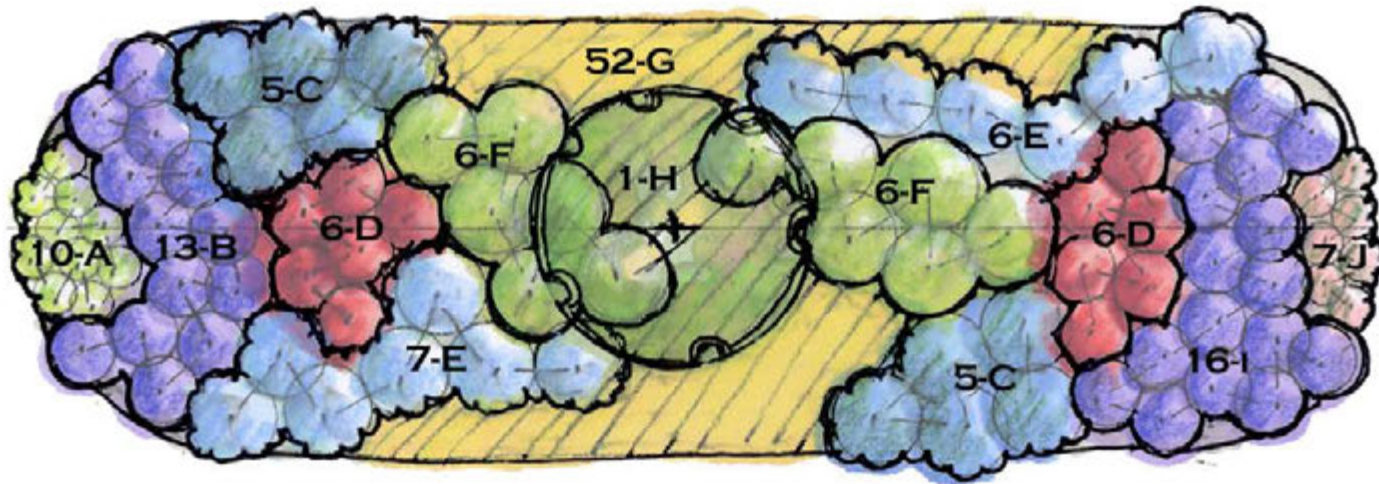


**FOR THE BIRDS RAINGARDEN**  
**450 SF**

Full Sun-Pt. Shade  
All zones

Scale: 1/4" = 1'





- A - *Chelone glabra* (White Turtlehead), 12" o.c.
- B - *Verbena hastata* (Blue Vervain), 18" o.c.
- C - *Amsonia tabernaemontana* (Blue-star flower), 2' o.c.
- D - *Lobelia cardinalis* (Cardinal Flower), 18" o.c.
- E - *Amsonia hubrechtii* (Narrow-leaf Blue-Star flower), 2' o.c.
- F - *Muhlenbergia capillaris* (Pink Muhly Grass)\*, 2' o.c., *Pennisetum alopecuroides* (Fountain Grass), 2' o.c.
- G - *Carex stricta* (Tussock sedge), 12" o.c.
- H - *Magnolia virginiana* (Sweet Bay)
- I - *Aster novi-belgii* 'Professor Anton Kippenburg' (New York Aster), 18" o.c.
- J - *Chelone lyonii* (Pink Turtlehead), 12" o.c.

note: o.c. = on center

\*Pink Muhly is hardy definitely through zone 7; probably hardy through zone 6



The Low Impact  
Development Center, Inc.

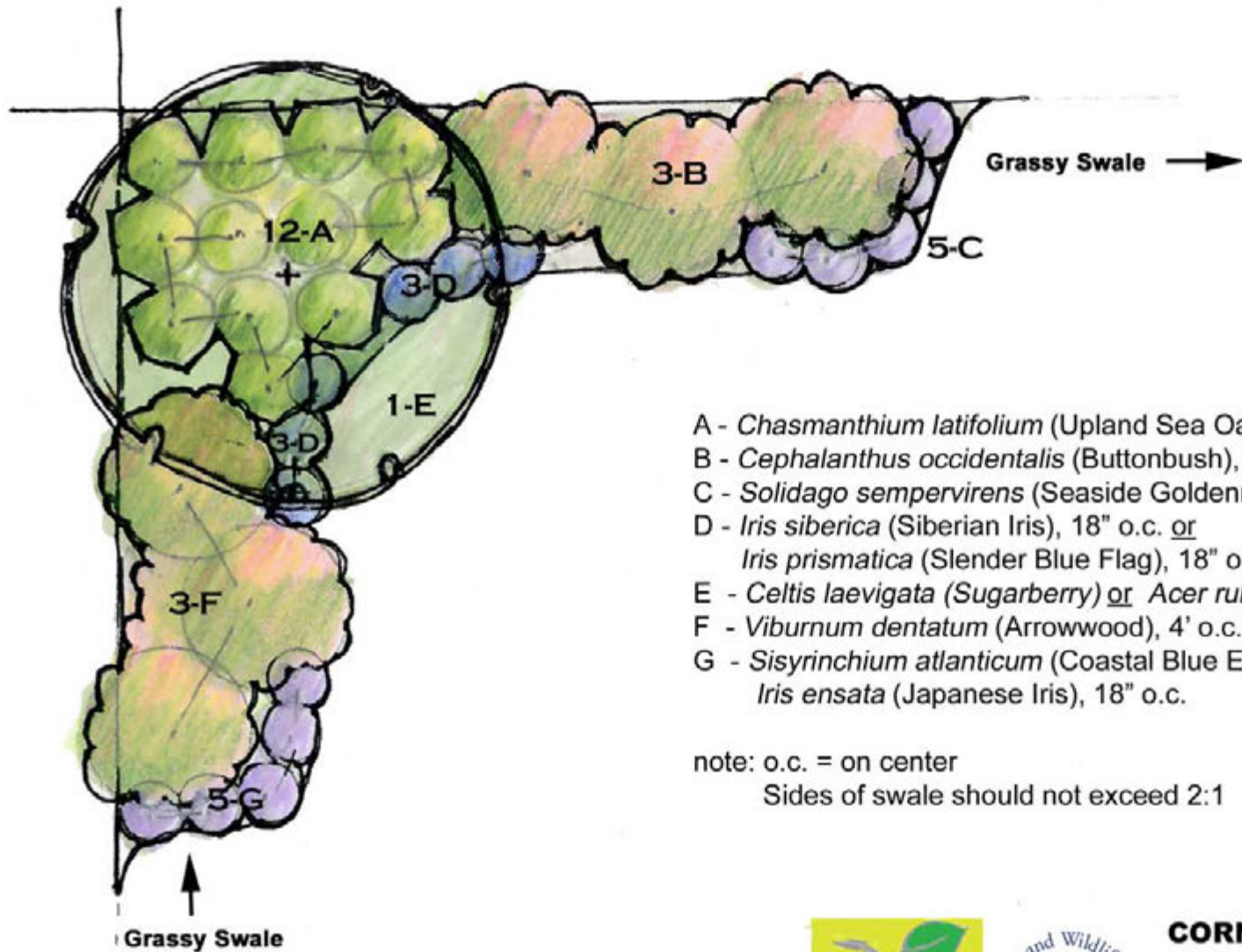


**BUTTERFLIES SWALE LOW  
MAINTENANCE RAINGARDEN**

250 SF  
Full Sun  
Coastal Plain

Scale: 1/4" = 1'





- A - *Chasmanthium latifolium* (Upland Sea Oats), 2' o.c.
- B - *Cephalanthus occidentalis* (Buttonbush), 4' o.c.
- C - *Solidago sempervirens* (Seaside Goldenrod), 18" o.c.
- D - *Iris siberica* (Siberian Iris), 18" o.c. or  
*Iris prismatica* (Slender Blue Flag), 18" o.c. (native)
- E - *Celtis laevigata* (Sugarberry) or *Acer rubrum* (Red Maple)
- F - *Viburnum dentatum* (Arrowwood), 4' o.c.
- G - *Sisyrinchium atlanticum* (Coastal Blue Eyed Grass), 18" o.c. or  
*Iris ensata* (Japanese Iris), 18" o.c.

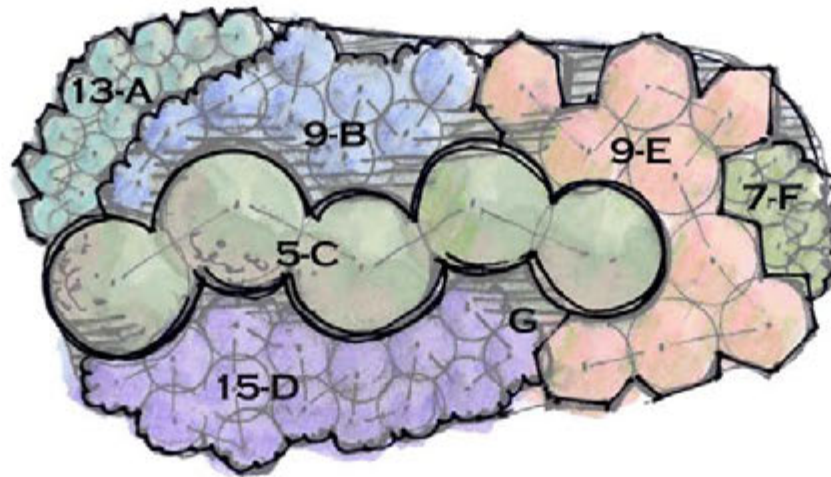
note: o.c. = on center  
Sides of swale should not exceed 2:1



**CORNER RAINGARDEN**  
**150 SF**  
Full Sun  
All zones,  
Coastal Plain

Scale: 1/4"=1'





- A - *Hemerocallis* 'Happy Returns' (Dwarf hybrid daylily),\* 12" o.c
- B - *Rudbeckia fulgida* (Black Eyed Susan), 18" o.c.
- C - *Itea virginiana* 'Little Henry' (Dwarf Virginia Sweetspire), 3' o.c.
- D - *Tradescantia virginiana* (Spiderwort), 18" o.c.
- E - *Echinacea purpurea* 'Magnus' (Magnus Purple Coneflower), 2' o.c.
- F - *Phlox subulata* 'Emerald Cushion Blue' or 'Emerald Cushion Pink'  
(Creeping Phlox, aka Thrift), 12" o.c.
- G - *Narcissus* naturalizing type (Daffodils), 4" o.c.

note: o.c. = on center

\*substitute *Iris fulva* for *Hemerocallis* if native is desired

**note: G indicates daffodils  
4" o.c., total 200 bulbs**

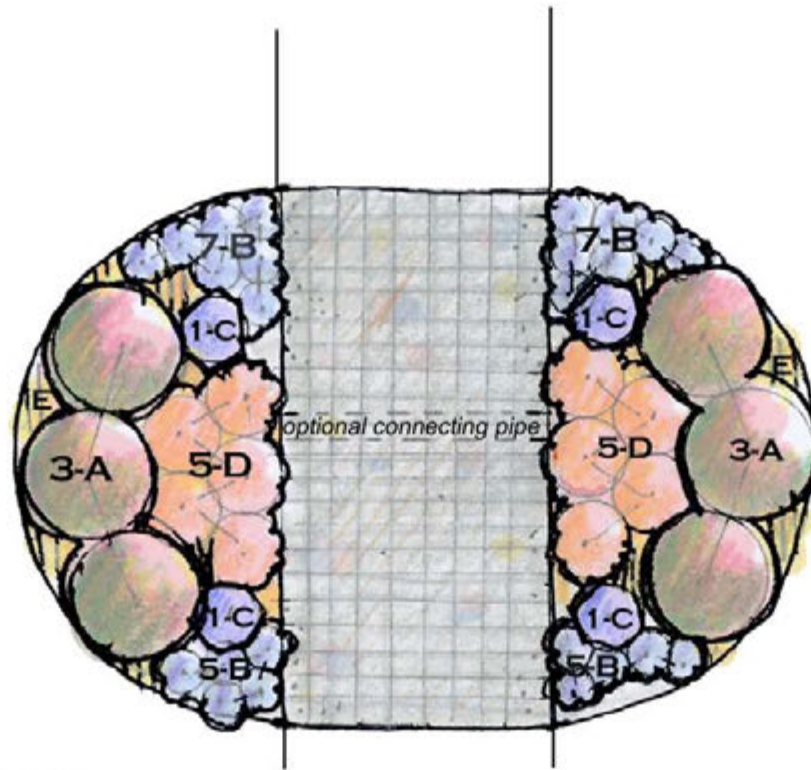


**DIVIDER RAINGARDEN  
130 SF**

Full Sun, Piedmont  
Zone 5a-8a

Scale: 1/4" = 1'





Choose one kind of plant for each letter

- A - *Itea virginiana* 'Little Henry', 3' o.c. (Dwarf Virginia sweetspire) or *Ilex glabra nana* (dwarf inkberry, keep clipped) or *Tripsacum dactyloides* (Gamma Grass)
  - B - *Phlox subulata* 'Emerald Cushion Blue', 12" o.c. (Creeping phlox) or *Iris cristata* (dwarf crested iris)
  - C - *Liatrus spicata* 'Kobold' (Gayfeather) or *Echinacea purpurea* 'Razzmatazz' (Purple coneflower)
  - D - *Aster novae-angliae* 'Purple Dome', 2' o.c. (Purple Dome New England Aster) or *Asclepias tuberosa* (Butterfly Weed) or *Hemerocallis* 'Happy Returns' (Dwarf Hybrid Daylily, yellow, reblooming)
  - E - *Narcissus* 'Thalia' or 'Ice Follies', 4" o.c, total 30 bulbs (White Daffodils)
- Note: o.c. = on center

Direct water into the garden from adjacent turf and downspouts  
Excavate the walk and garden areas at the same time and install all soil improvements for treating the runoff in both the pavement and planting areas at the same time.

The paver area will be underlain with open graded stone and should be vertically separated from the rain gardens with a curb.



**ENTRY RAINGARDEN  
FLANKING WALK WITH  
PERMEABLE PAVERS  
113 SF GARDEN, 72 SF PAVERS**

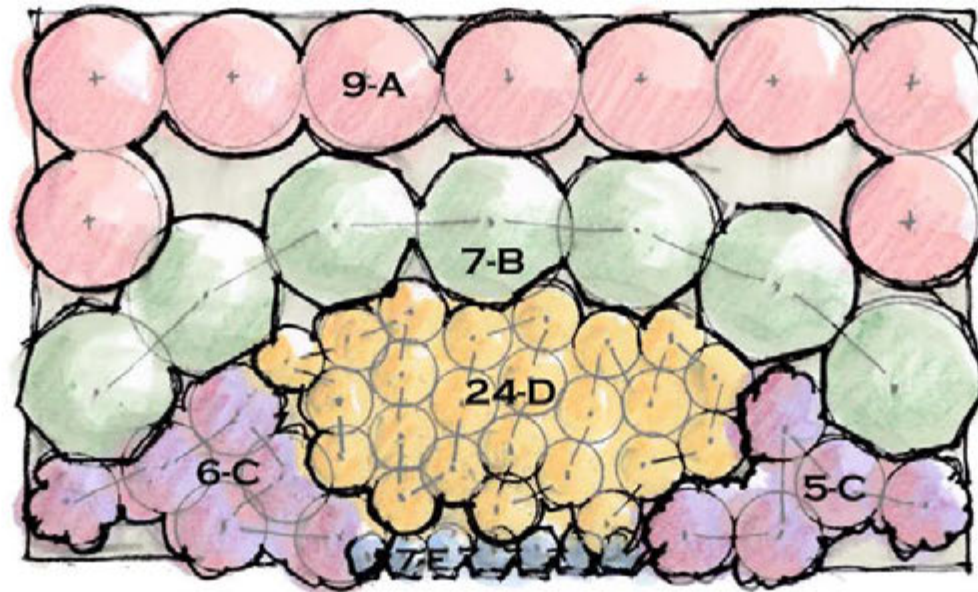
Coastal Plain

Full Sun

Zones: All

Scale: 1/4" = 1'





- A - *Rosa Knock-Out*, 'Radrazz' (Knock-Out Rose)\*, 3' o.c.
- B - *Clethra alnifolia* 'Sixteen Candles', 3 1/2' o.c.
- C - *Echinacea purpurea* 'Kim's Knee-Hi' (Purple Coneflower), 2' o.c.
- D - *Iris virginica* (Southern Blue Flag)\*\* or *Phlox paniculata* 'David' (White Garden Phlox), 15" o.c.
- E - *Phlox subulata* 'Emerald Cushion Blue' or 'Candy Stripe'\*\*, 12" o.c.

note: o.c.= on center

Could substitute *Liatrus spicata* or *Cheleone glabra* for *Echinacea* (or peonies)

\* Knock-out Roses and Peonies in raingardens are not suited to the lowest areas but are very successful on the very well drained but frequently wet edges and upper slope sections

\*\*Southern Blue Flag is hardy in zones 5-9 but is better in the Piedmont and Coastal Plain provinces

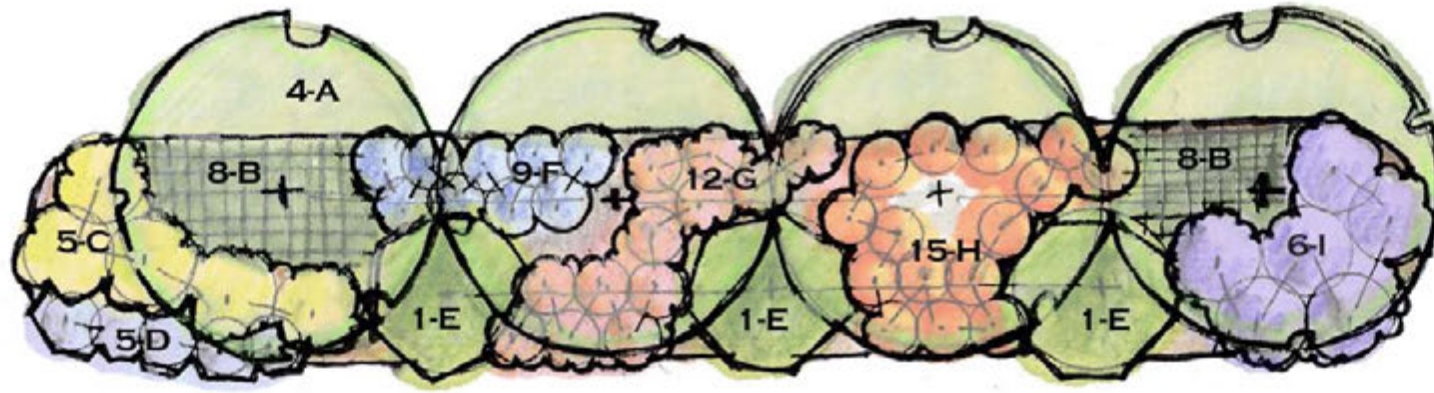


**FRAGRANT RAINGARDEN  
FORMAL 21'x12' = 252 SF**

Full Sun  
Zones 5b-7b

Scale: 1/4"=1'





- A - *Acer rubrum* (Red Maple), 18' o.c.
- B - *Chasmanthium latifolium* (Upland Sea Oats), 2' o.c.
- C - *Viburnum trilobum* (American Cranberrybush), 5' o.c.
- D - *Itea virginiana* 'Henry's Garnet', 3' o.c.
- E - *Chionanthus virginicus* (Fringetree), 18' o.c.
- F - *Viburnum acerfolium* (Mapleleaf viburnum) or  
*Kalmia angustifolia* (Sheep Laurel), 3' o.c.
- G - *Ilex glabra nana* (Dwarf Inkberry), 3' o.c.
- H - *Myrica cerifera* 'Nana' (Dwarf waxmyrtle), 4' o.c.
- I - *Vaccinium corymbosum* (Highbush blueberry), 5' o.c.

note: o.c. = on center

in zone 5, *Alnus incana* (Specked Alder) may be substituted for *Acer rubrum* and *Pieris floribunda* (Mountain Pieris) may be substituted for *Viburnum acerfolium* / *Zenobia pulverulenta*



### HEDGEROW RAINGARDEN

903 SF

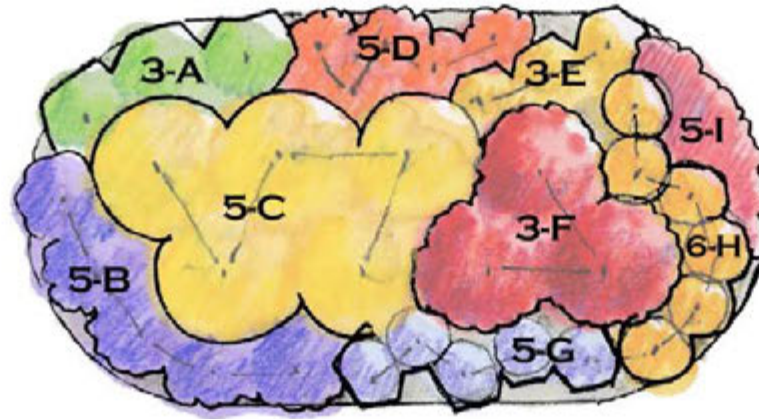
Full Sun

All zones

Coastal Plain

Scale: 1"=10'





- A - *Eupatorium rugosum* 'Chocolate' (White Snakeroot), 2' o.c.
- B - *Eupatorium coelestinum* (Hardy Ageratum), 2' o.c.
- C - *Helianthus angustifolius* (Narrow-leaved Sunflower), 3' o.c.
- D - *Asclepias tuberosa* (Butterflyweed), 18" o.c.
- E - *Rudbeckia hirta* (Black-eyed Susan), 18" o.c. or *Solidago* 'Golden Fleece', 18" o.c.
- F - *Hibiscus moscheutos* (Marsh Mallow), 3' o.c.
- G - *Liatrus spicata* (Blazing-Star), 18" o.c.
- H - *Lilium superbum*, (Turk's Cap Lily), 18" o.c.
- I - *Echinacea purpurea* (Purple Coneflower), 18" o.c.

note: o.c. = on center



**HERBACEOUS PERENNIALS RAINGARDEN**

130 SF

Tall and Bold Summer-Fall Rainbow

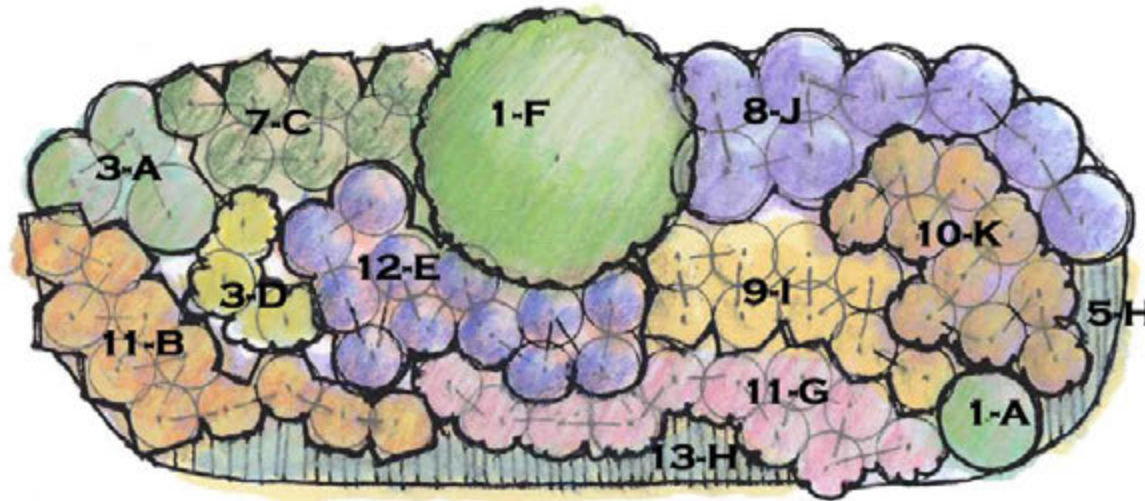
Full Sun

All zones

Coastal Plain

Scale: 1/4"=1'





- A - *Muhlenbergia capillaris* (Pink Muhly Grass), 2' o.c.\*
- B - *Hemerocallis* 'Happy Returns' (Happy Returns Daylily), 18" o.c.
- C - *Juncus effusus* (Soft Rush), 18" o.c.
- D - *Solidago* 'Firecracker' (Firecracker Goldenrod), 2' o.c.
- E - *Iris Louisiana Hybrid* (Louisiana Iris), 18" o.c.
- F - *Panicum virgatum* 'Prairie Skies' (Switch Grass)
- G - *Echinacea purpurea* 'Kim's Knee-Hi' (Dwarf Purple Coneflower), 18" o.c.
- H - *Phlox subulata* 'Emerald Cushion Blue' (Thrift), 12" o.c.
- I - *Iris siberica* 'Caesar's Brother' or *Iris versicolor* (native), 18" o.c.
- J - *Aster novae-anglia* 'Purple Dome' (Dwarf New England Aster), 2' o.c.
- K - *Rudbeckia fulgida* 'Goldsturm' (Black-eyed Susan), 18" o.c.

note: o.c.= on center

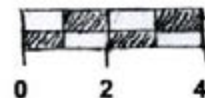
\* if in zone 6a or colder, substitute  
*Chasmanthium latifolium* (Upland Sea Oats), or  
*Deschampsia cespitosa* (Tufted Hair Grass)

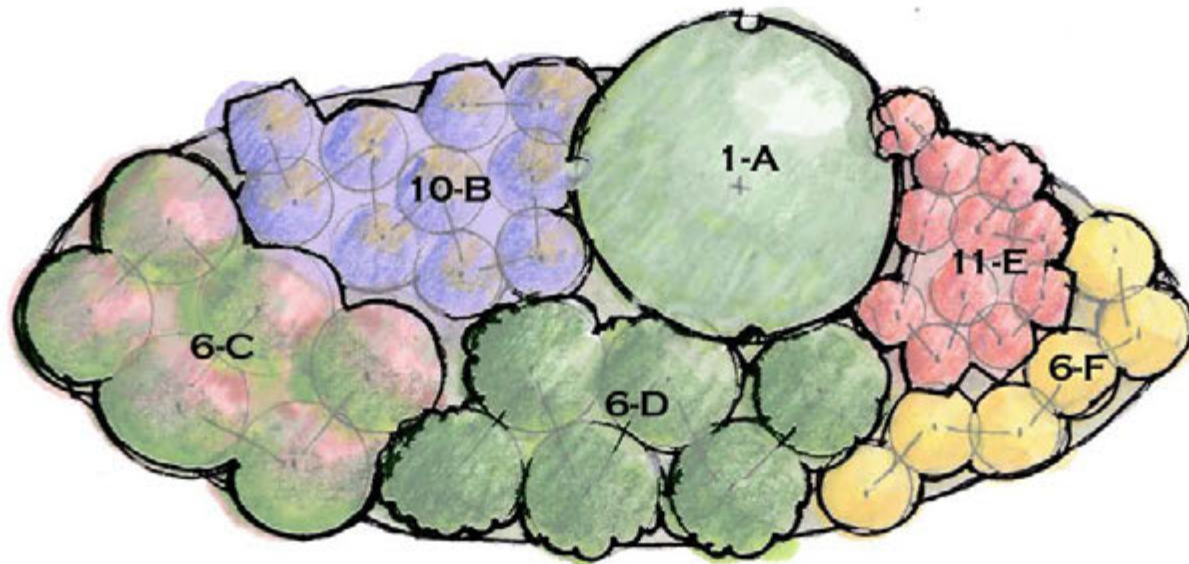


**HERBACEOUS PERENNIALS BORDER  
 RAINGARDEN 200 SF**

Full Sun, Zones 5b-7b  
 Coastal Plain

Scale: 1/4"=1'





### PLANT CHOICE

- A - *Hamamelis virginiana* (Witchhazel)  
*Cornus amomum* (Silky Dogwood)
- B - *Aster novae-angliae* (New England Aster) 2' o.c.
- C - *Vaccinium angustifolium* (Blueberry), 3' o.c.
- D - *Clethra alnifolia* 'Ruby Spice', 3' o.c.
- E - *Asclepias tuberosa* (Butterfly weed), 12" o.c.
- F - *Solidago* 'Golden Fleece', 2' o.c.

### DESIGN VALUE

- Tallest/Structural element in garden (8-12')
- Medium coarse texture, white spring flowers, yellow fall color
- Medium Tall perennial, billowing fall color (lavendar), butterflies
- Medium height (3-5'), year round color interest, fruit
- Year round interest, color mass in early summer (pink) and fall (yellow)
- Late Spring color mass (orange), interesting texture
- Fall yellow mass of color, compliments Witchhazel and Aster, butterflies

note: o.c. = on center

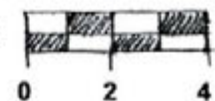
\* also listed as *Symphotrichum novae-angliae*

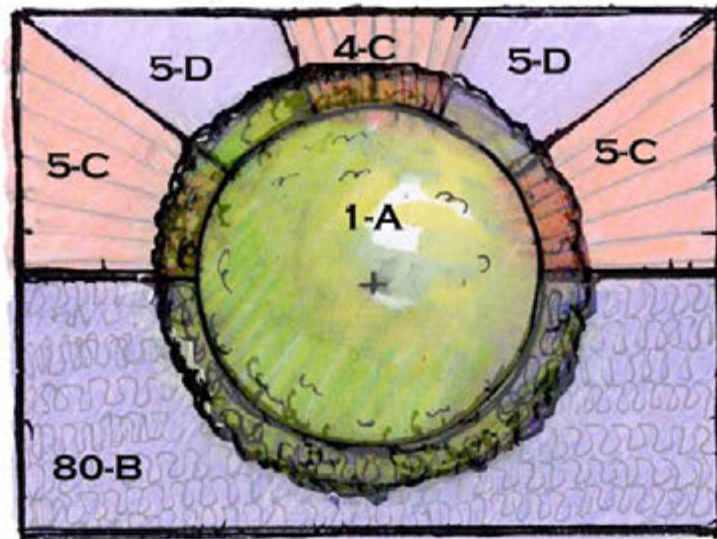


### LOW MAINTENANCE RAINGARDEN DEER RESISTANT

**200 SF**  
Full Sun  
Coastal Plain  
Zones 5a-7b

Scale: 1/4" = 1'





### POSSIBLE PLANTS

- A - *Magnolia grandiflora* 'Little Gem' (Dwarf Southern Magnolia)  
*Betula nigra* 'Little King' (Dwarf River Birch)  
*Nyssa aquatica* (coastal areas and S. of Wash. D.C. only) (Swamp tupelo)  
*Ilex verticillata* (Winterberry) (plant 1 male and 1 female in the same hole) (or *Ilex decidua*, (possumhaw) male and female)
- B - *Ajuga reptans*, 12" o.c. (Carpetbugle)  
*Ceratostigma plumbaginoides*, 12" o.c. (Leadwort)  
*Oenothera fruticosa*, 12" o.c. (Primrose)  
*Liriope spicata*, 12" o.c. (Liriope)
- C - *Iris fulva*, 18" o.c. (Copper Iris)  
*Iris versicolor*, 18" o.c. (Blue Flag Iris)  
*Iris siberica*, 18" o.c. (Siberian Iris)
- D - *Iris* La. Hybrid, 2' o.c. (Louisiana Hybrid Iris, many colors)  
*Amsonia hubrechtii*, 2' o.c. (Bluestar)

note: o.c. = on center

### DESIGN VALUE

For fragrance, evergreen (zone 6b-8)  
 Interesting winter bark (zone 5b-8)  
 Interesting form and fall color (zone 7a-8)

Attractive fruit, wildlife value (zone 5a-7b; *Ilex decidua* OK zone 6 and warmer)  
 Groundcover, evergreen, purple flowers (all zones)  
 Groundcover, semi-evergreen, blue flowers (all zones)  
 Native Groundcover, yellow flowers (all zones)  
 Evergreen/semi-evergreen, blue flowers (all zones)  
 Native wetland iris, orange flowers (all zones)  
 Native wetland iris, blue flowers (all zones)  
 Iris which spreads, white or purple flowers (all zones)  
 Wetland iris, purple, mauve, yellow or blue flowers (all zones)  
 Fine texture, blue flowers, yellow fall color (all zones)



### ONE NICE TREE

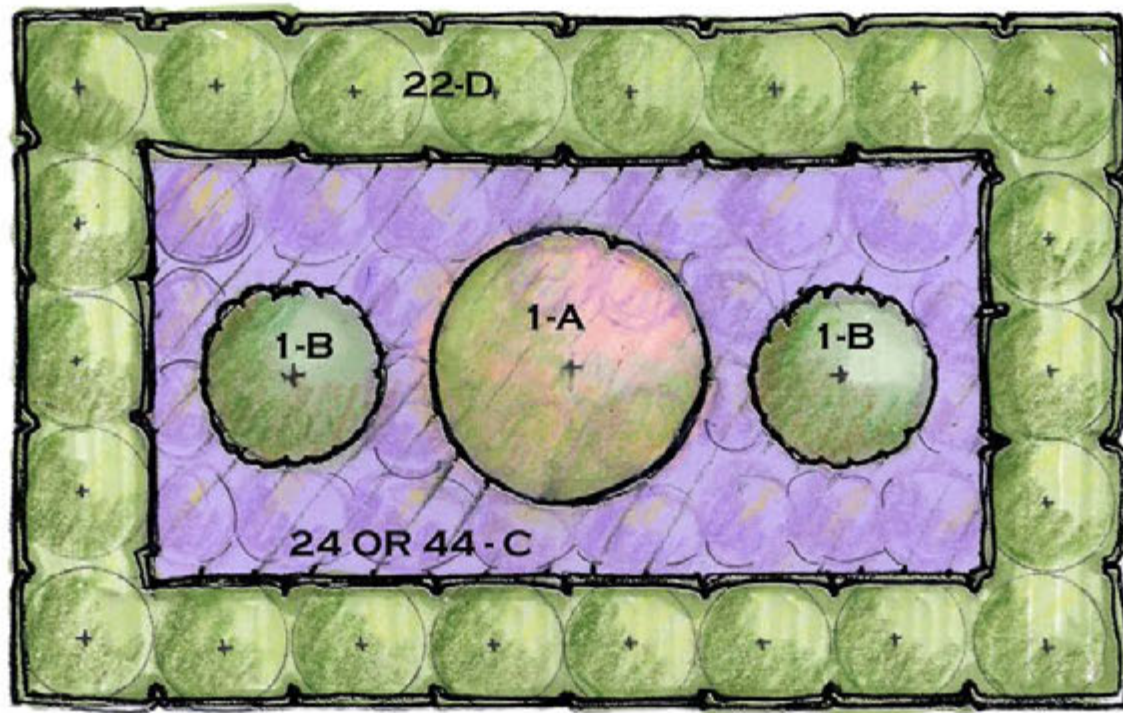
192 SF 16' X 12'

Full Sun, Zone varies

Coastal Plain

Scale: 1/4" = 1'





**PLANT CHOICES (choose 1 of each type)**

- A - *Alnus serrulata* (Smooth Alder) or  
*Magnolia virginiana* (Sweetbay Magnolia)
- B - *Chaemacyparis thyoides* 'Heatherbun' (Dwarf White Cedar)  
*Chaemacyparis pisifera* 'Filafera aurea' (Dwarf Sawara False Cypress)
- C - *Aster novae-angliae* 'Purple Dome' (Purple Dome New England Aster), 2' o.c. (24)  
*Amsonia* X 'Blue Ice' (Bluestar), 18" o.c. (44)
- D - *Ilex glabra* 'Densa' or 'Shamrock' (Inkberry), 3' o.c.  
*Myrica pensylvanica*, (Bayberry), 3' o.c.  
*Myrica cerifera* 'Nana' (Dwarf Wax Myrtle), 3' o.c.  
*Ilex vomitoria* 'Schilling's Dwarf' (Dwarf yaupon holly) for zone  
7a or warmer, 3' o.c.

note: o.c.= on center

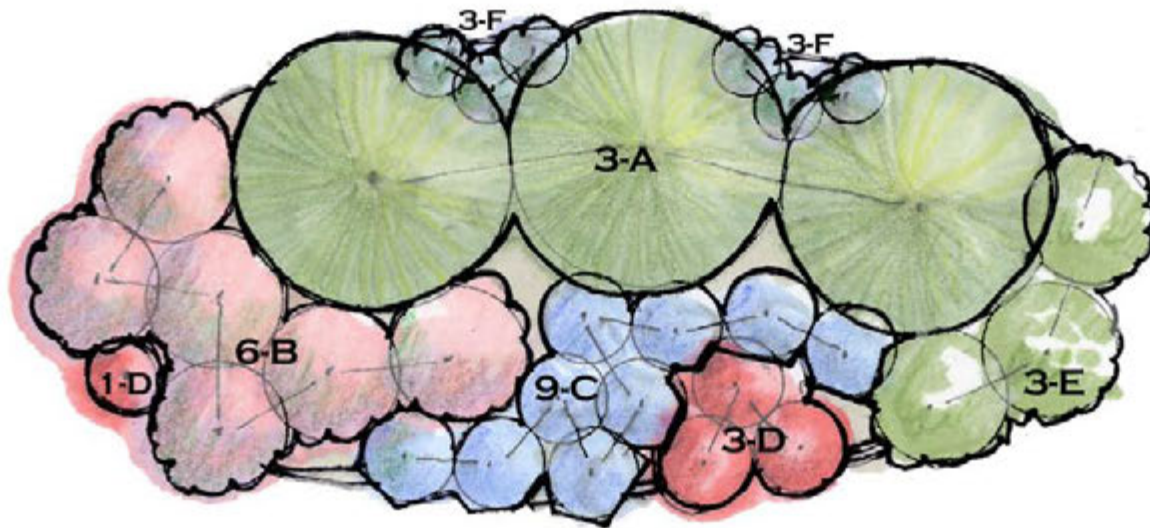
**DESIGN FUNCTION**

- Center accent
- Year Round Color shrub, fine texture
- Groundcover
- Hedge



**PARTERRE RAINGARDEN**  
**384 SF**  
 Full Sun,  
 Zones 5b-7  
 Coastal Plain  
 Scale: 1/4"=1'





A - *Vaccinium corymbosum* (Highbush blueberry), 6' o.c or  
*Viburnum carlesii* (Korean Spice Viburnum), or  
*Viburnum dentatum* 'Blue Muffin' (Compact Arrowwood)

B - *Zenobia pulverulenta* ' (Dusty Zenobia), 3' o.c.

C - *Amsonia hubrechtii* (Blue-Star Flower), 2' o.c.

D - *Lobelia cardinalis* (Cardinal Flower), 2' o.c. or *Asclepias tuberosa* (Butterflyweed), 2' o.c.

E - *Hydrangea quercifolia* 'Pee Wee' (Dwarf Oakleaf Hydrangea), 3' o.c., or  
*Hydrangea arborescens* (Smooth Hydrangea), 3' o.c., or

F - *Iris versicolor* (Northern Blue Flag), 18" o.c.

White, Blue, Red

Blue

Red

White/Red

Blue

note: o.c. = on center



The Low Impact  
Development Center, Inc.



**RED, WHITE AND BLUE  
LOW MAINTENANCE BORDER  
RAINGARDEN**

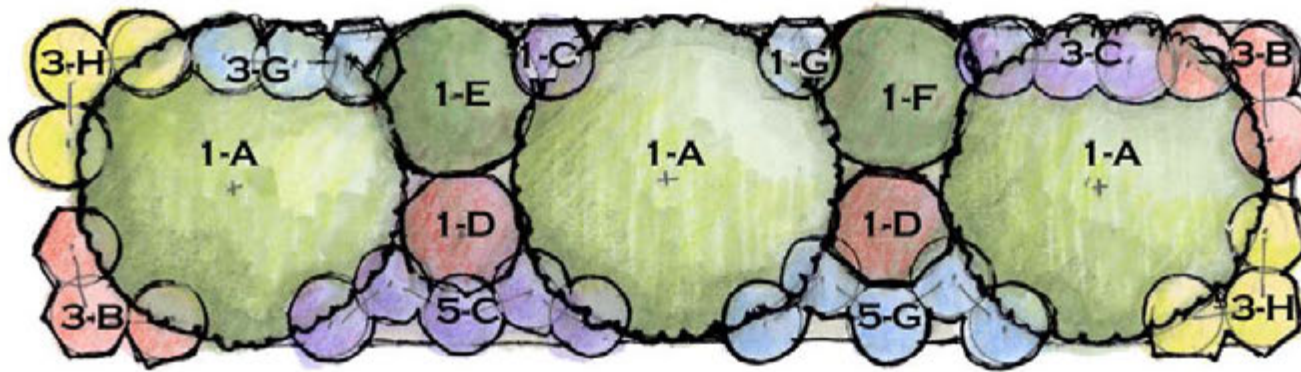
**200 SF**

Full Sun-Part Shade

Coastal Plain

Scale: 1/4"=1'





- A - *Ilex opaca* (American Holly, #2 or other various cultivars), 10' o.c.\*
- B - *Iris fulva* (Copper Iris), 2' o.c.
- C - *Iris Louisiana Hybrid* (Louisiana Iris, many colors), 2' o.c.
- D - *Ilex verticillata* 'Maryland Beauty' or 'Red Sprite' (Female Winterberry), 3' o.c.\*
- E - *Ilex verticillata* 'Jim Dandy' (male pollinator) (Male Winterberry)
- F - *Fothergilla gardenii* 'Mt. Airy' (Fothergilla)
- G - *Iris versicolor* (Blue Flag), 2' o.c.
- H - *Iris ensata* (Japanese Iris, many colors), 2' o.c.

note: o.c. = on center

\* If quicker screening is desired, subst. 5 - *Kalmia angustifolia* (Sheep Laurel) or *Ilex glabra* 'Shamrock', 6' o.c. and add one more *Ilex verticillata* 'Maryland Beauty' or 'Red Sprite' and group them in the center front of the bed

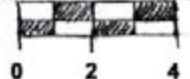


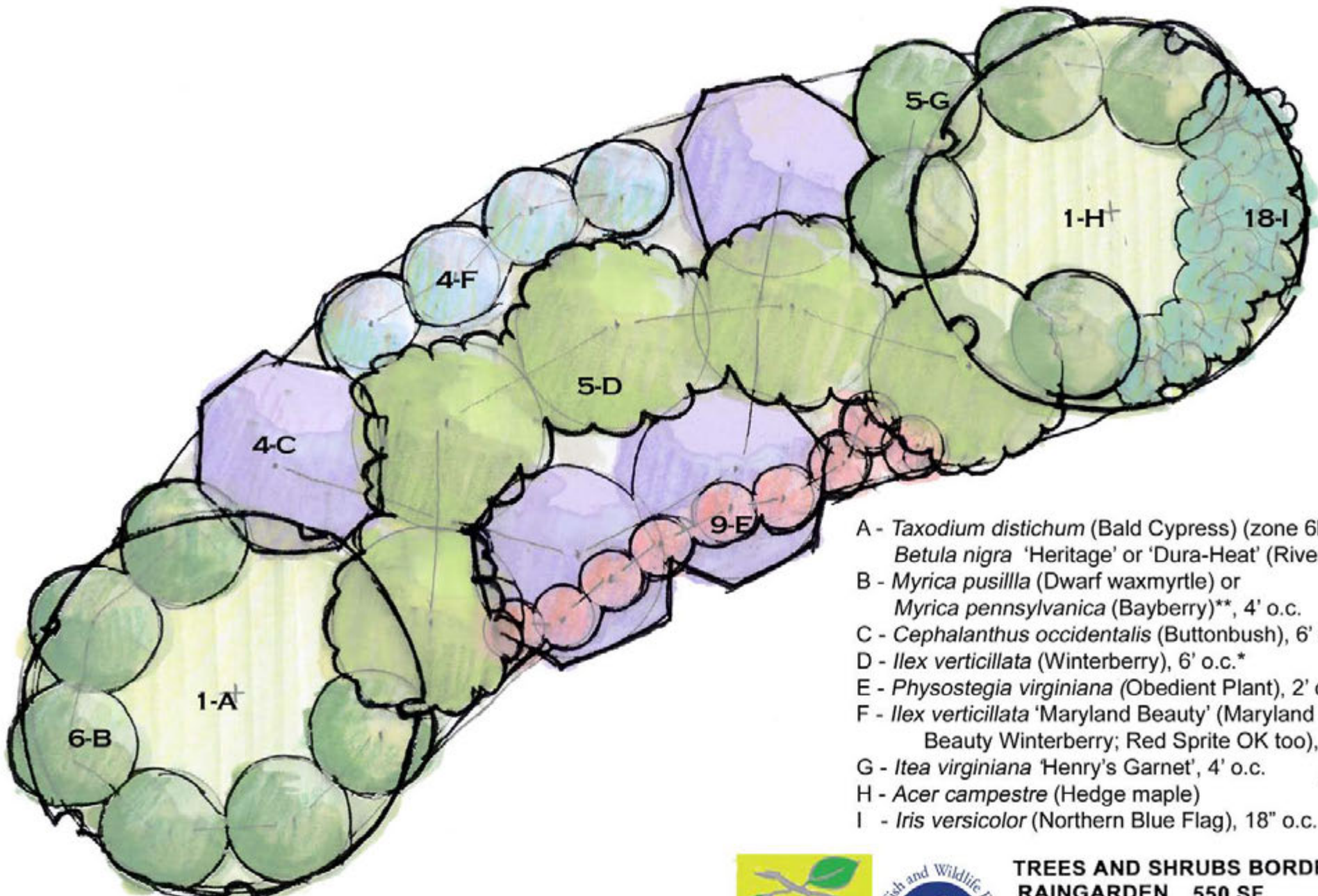
**SCREENING RAINGARDEN  
256 SF**

Full Sun /Partial Sun  
Zone 5b-8a

Coastal Plain

Scale: 1/4" = 1'





- A - *Taxodium distichum* (Bald Cypress) (zone 6b-7b)  
*Betula nigra* 'Heritage' or 'Dura-Heat' (River Birch)
- B - *Myrica pusilla* (Dwarf waxmyrtle) or  
*Myrica pennsylvanica* (Bayberry)\*\*, 4' o.c.
- C - *Cephalanthus occidentalis* (Buttonbush), 6' o.c.
- D - *Ilex verticillata* (Winterberry), 6' o.c.\*
- E - *Physostegia virginiana* (Obedient Plant), 2' o.c.
- F - *Ilex verticillata* 'Maryland Beauty' (Maryland  
Beauty Winterberry; Red Sprite OK too), 3' o.c.
- G - *Itea virginiana* 'Henry's Garnet', 4' o.c.
- H - *Acer campestre* (Hedge maple)
- I - *Iris versicolor* (Northern Blue Flag), 18" o.c.

note: o.c = on center  
 \* requires 1 male ('Jim Dandy') and 4 females ('Afterglow')  
 \*\* will need to maintain at 5' if using the Bayberry



**TREES AND SHRUBS BORDER  
 RAINGARDEN 550 SF**

Full Sun  
 Zones 5b-7b  
 Coastal

